

PANGEA GIVING
PRESENTS:

FUNDING CLIMATE ACTION

Partnering with Grassroots
Organization





Pangea

Giving for Global Change

Pangea Giving supports **grassroots organizations globally** to improve the well-being of their communities through **engaged giving.**

supporting communities since 2002



Community of about 60 individuals
in Seattle area

- Engaged and direct giving
- Learning commitment: site visits, educational events

20 Partners in 6 countries

- \$132,000 awarded in 2019
- Funding self-defined needs of communities



Agenda:

3:00 PM to 3:20PM: Food & Socializing

3:20 PM – 4:00 PM: Introductions,
Presentation, Q&A

4:00 PM – 5:00 PM: Small Roundtable
discussions

PANGEA GIVING
PRESENTS:

FUNDING CLIMATE ACTION

Partnering with Grassroots
Organization





TABLE OF CONTENTS

TOPICS FOR DISCUSSION

Background

Questions & Key Terms

Role of Philanthropy in Climate Action

Large Funders

Small Funders

Partnerships

SOMETHING TO THINK ABOUT...

Less than 2% of
philanthropic giving is going
towards climate action

EFFECTIVE CLIMATE ACTION INVOLVES

Mitigation
&
Adaptation

-


Currently...

contributions to adaptation and grassroots initiatives are minuscule compared to the resources needed



A top-down photograph of several small green seedlings in biodegradable pots on a rustic wooden surface. One pot is tipped over, spilling soil and a seedling. The scene is lit with a soft, natural light, creating a warm and organic atmosphere.

WHAT ROLES DO SMALL FUNDERS PLAY IN CLIMATE ACTION?



**HOW CAN SMALL FUNDERS
MOST EFFECTIVELY FUND
CLIMATE ACTION AND BEST
SUPPORT THE ORGANIZATIONS
THEY FUND?**

KEY TERMS: BROAD & FLEXIBLE



OPEN INTERPRETATION

For how your organization fits into the fight for climate change

FITS THE NEEDS OF THE TIME & COMMUNITY

Through negotiation of definitions

Key Terms & Definitions

CLIMATE ADAPTATION

"Adapting to the climate change already in the pipeline"

CLIMATE MITIGATION

"Reducing emissions of and stabilizing the levels of heat-trapping greenhouse gases in the Atmosphere"

CLIMATE RESILIENCE

"Ability to anticipate, prepare for and respond to hazardous events, trends, or disturbances related to climate"

CLIMATE JUSTICE

"Making systemic changes that are required to address unequal burdens to our communities and realign our economy with our natural systems"

ROLES OF FUNDERS IN CLIMATE ACTION

DEFINITION

OVERVIEW

LARGE FUNDERS

SMALL FUNDERS



DEFINING SMALL & LARGE FUNDERS



GRANT SIZES

Indicator of funding area despite total assets of the foundation

LARGE FUNDERS

Grants Amounts > \$25,000

Mitigation Projects

SMALL FUNDERS

Grant Amount < \$25,000

Adaptation

"GLOBAL PUBLIC GOOD"



MITIGATION



ADAPTATION

"PRIVATE INVESTMENT"

Key Attributes: Large Funders



LARGE CAPACITY



INFLUENCE



FINANCIAL ASSETS

Primary Role: Large Funders



INVEST

Long-term in innovation and research



CAPACITY BUILDING

Launch high capital programs and organizations off the ground



INFLUENCE

International cooperation and policies on climate change



CHINA, INDIA , US

In hopes of fostering international cooperation to promote climate policy and to implement international agreements

ENERGY

Promoting energy efficiency and renewable energy targeting the most energy intensive sectors

Large Funder Projects

GLOBAL LEADERSHIP

Supporting leadership for climate action to affect change in climate policies

SUSTAINABLE DEVELOPMENT

Integrating and promoting resilient, sustainable and adaptive built environments in order to reduce the consumption of fossil fuel and greenhouse gas emissions

THE ROLE OF SMALL FUNDERS



Grassroots
Initiatives



Adaptation

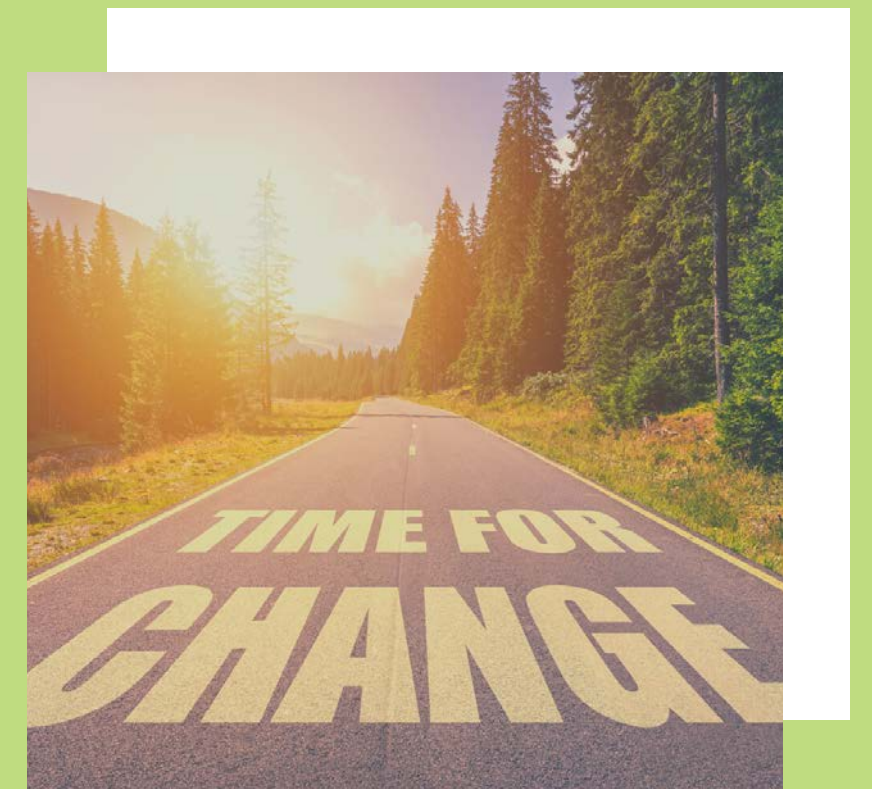
Key Attributes: Small Funders



EQUITY & EMPOWERMENT



ASSUME MORE RISK



FLEXIBILITY

Key Attributes: Small Funders



EXPERTISE

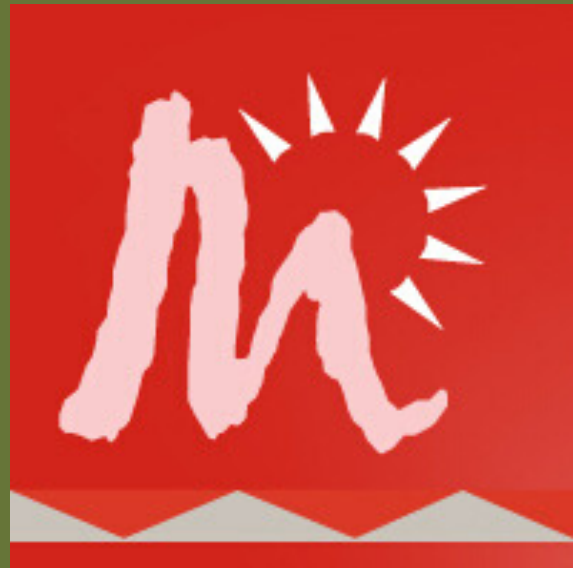


CAPACITY BUILDING &
VISIBILITY



ADDITIONAL SUPPORT

Small Funder: Case Studies



THE MIZE FAMILY
FOUNDATION

Thousand
Currents

THOUSAND CURRENTS



LAIRD NORTON
FAMILY FOUNDATION



THE MIZE FAMILY FOUNDATION

CLIMATE JUSTICE

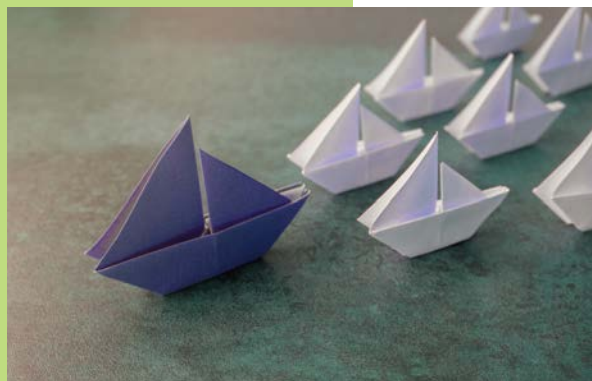
“is a movement to ensure that climate change policies are equitable, acknowledging the disproportionate burden of climate change on poor and marginalized communities, safeguarding human rights, and providing solutions through systemic change.”

- The Mize Family Foundation

THE MIZE FAMILY FOUNDATION



Innovative Media



Leadership Development



Community Empowerment



Human Rights

ENVIRONMENTAL LAW ALLIANCE WORLDWIDE



ELAW

Provides a network of legal and scientific support to those working on the ground

What they do:

- Train community paralegals
- Help communities pursue legal action
- Provide scientists to look over plans for development, monitoring environmental conditions, and provide alternatives.

FRONT AND CENTERED

Action coalition of racial and economic justice organizations.

What they do:

- Gives support in building partnerships and collaboration
- Policy research, writing, and advocacy;
- Grassroots and voter education
- Mobilization
- Fund development
- Communications and storytelling.



FRONT AND
CENTERED



GLOBAL PRESS INSITUTE

An international journal with the goal to have global communities represented accurately and cover topics not typically covered in other new sources.

What they do:

- Trains local women in the developing world to become journalist with the promise of long-term employment after the completion of their training program



THOUSAND CURRENTS

THOUSAND CURRENTS



Food Sovereignty



Alternative Economy



Climate Justice

ZIMBABWE SMALL HOLDER ORGANIC FARMERS' FORUM

Influence policy and raise awareness of issues regarding :

- Food Sovereignty,
- Land Justice
- Environmental Justice

Topics include

- Agroecological farming Methods
- Organic farming techniques
- Natural resource management
- Produce valorization
- Establishing herbal gardens



NARI CHETANA KENDRA



What they do:

- Established savings and credit cooperatives for women -- which contributed to poverty reduction and raising living standards.
- Changed the banking landscape in Nepal -- to be more competitive with the cooperatives offering lower lending rates that are fairer.

SOCIAL EMPOWERMENT EDUCATIONAL PROGRAMME

They work to build local leaders in many sectors -

- Women and youth movements
- Development sector,
- Anti-mining movement,
- Environmental justice sector.





LAIRD NORTON FAMILY FOUNDATION



Policy, Research, and Demonstration



Reducing Use of Fossil
Fuels



Carbon
Sequestration



Renewable
Energy

POWER PAST COAL

POWER
PAST
COAL

The Laird Norton Family Foundation gave Power Past Coal a grant in 2018 to support the work to make sure that no coal export terminal is built in Longview, Washington

GEOS INSTITUTE

Laird Norton used their funding to support carbon research in regional and national forest and outreach to private landowners, policy makers and state agencies across Washington and Oregon.

The logo for the GEOS Institute, featuring the word "GEOS" in a large, bold, dark red serif font, with the word "INSTITUTE" in a smaller, dark red serif font directly below it. The logo is centered within a white rectangular box that has a thin black border. The entire box is set against a white background that is part of a larger white area on the left side of the slide.

GEOS
INSTITUTE

Carbon Cycle Institute

CARBON CYCLE INSTITUTE

They work with farmers to:

- Assess opportunities to reduce greenhouse gasses and carbon sequestration on their land,

and have,

- Developed a framework for land management that emphasizes carbon sequestration as its main goal.

Project Themes

Human
Rights/Advocacy



Community
Development



Women-led
Initiatives



Food
Sovereignty



A close-up photograph of several hands holding white puzzle pieces against a warm, golden-brown background. The hands are positioned around the pieces, suggesting they are being assembled or held together. The lighting is soft and directional, creating a warm atmosphere.

PARTNERSHIPS

Benefits of Collaboration

LEARNING OPPORTUNITY

Strategies, expertise, and experience



RISK MANAGEMENT

When learning about new area of funding or trying new strategies.



INCREASED IMPACT

Larger pools of funding can be organized together



DECISION MAKING PROGRESS

Different viewpoints as the table can be a catalyst for innovation



PARTNERSHIP MODELS

THE RANGE OF INTEGRATION

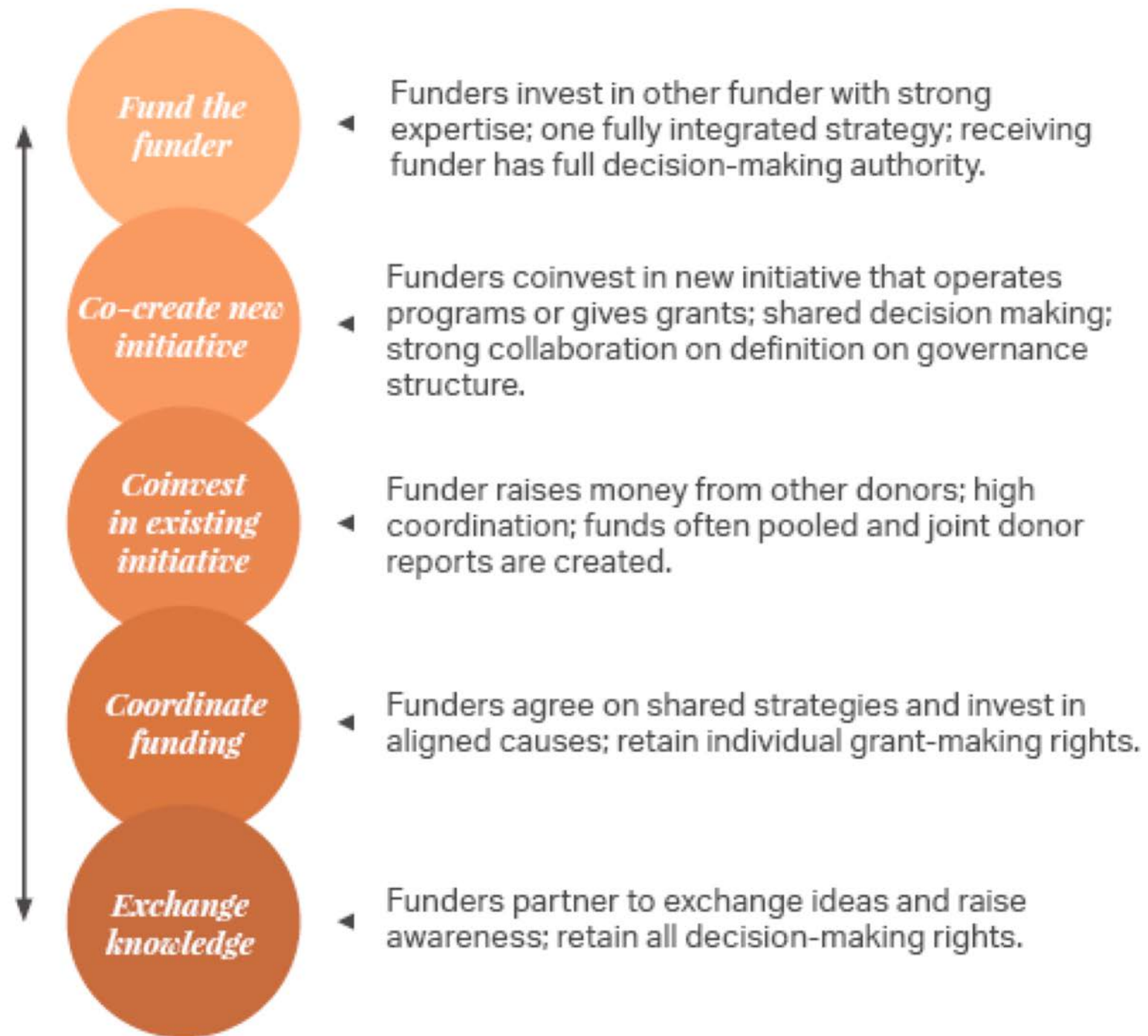
Are **not prescriptive** approaches

Can use **more than one model** at a time

Should be **strategic and reflective** of the project's time and place

It should **benefit everyone**

Higher Integration



Higher Independence

(Rockefeller Philanthropy Advisors)

PARTNERSHIP GOVERNANCE

PREPARING FOR PITFALLS & MITIGATING RISK



Define & Agree
on Shared Values



Impact
Measurements



How & When to
Bring in Partners



Agree on Time
Frames for
Participation



Who Gets Credit
and How

The image features a rustic wooden background with a white envelope-like shape. A large green rectangle is centered over the envelope, containing the text 'THANK YOU FOR COMING!'. To the right, a small bouquet of white daisies is visible. A thin green vertical line is on the far right edge, and a thin green horizontal line is at the bottom left.

THANK YOU
FOR COMING!

